



GLOBAL PROGRAMME ON INDIGENOUS PEOPLES BIOCENTRIC RESTORATION CERTIFICATE of HECTARES UNDER RESTORATION

Certification Statement

The Indigenous Peoples Unit (PSUI) at the United Nations Food and Agriculture Organization (FAO) and the Organization Centro Cindes certifies that the degraded areas included in this certificate are under a restoration process led by **Quechua** Indigenous Peoples, in alignment with the principles and methodology outlined in the **Global Programme on Indigenous Peoples Biocentric Restoration**.

This certificate acknowledges that Indigenous Peoples' Biocentric Restoration actions carried out in the traditional territory of **Quechua** during the period 2024, located in the **Andes Highlands** biome are aligned with the principles, spirit, and methodology of the Global Programme on Indigenous Peoples' Biocentric Restoration, co-developed by Indigenous Peoples' leaders and FAO Indigenous Peoples Unit.

The restoration actions undertaken in this territory have been guided by knowledge systems and cosmogony of Indigenous Peoples, who see humankind as part of nature and whose beliefs are embedded in the principle of biocentrism, where humans are a part of the ecosystem and not its sole centre. All these elements form core dimensions of the Indigenous Peoples Biocentric Restoration approach.

This certificate acknowledges Indigenous Peoples as both right and knowledge holders, in alignment with the United Nations Declaration on the Rights of Indigenous Peoples (UNDRIP). Knowledge holders capable of restoring degraded ecosystems in their territories through their Indigenous Peoples' food and knowledge systems, culture, spiritual values, self-governance and stewardship practices that guide harmonious coexistence between humans, forests, drylands, waters, soils, species, and all living beings.

During this period, the Biocentric Restoration actions in the **Quechua** Indigenous Peoples territory resulted in 48,847 plants planted, covering 73.16 hectares that are under restoration, involving 5 native species, and the engagement of 524 Indigenous Peoples. These efforts were supported by 9 Schools of Life, reaching 524 participants, with the collaboration of Centro Cindes.

These Indigenous Peoples' Biocentric Restoration efforts were supported by the FAO Indigenous Peoples Unit and other partner organizations in alignment with priorities identified by the Indigenous Peoples involved. The actions undertaken by Indigenous Peoples, under the Indigenous Peoples' Biocentric Restoration Global Programme, contribute directly to the objectives of the United Nations Decade on Ecosystem Restoration, the CBD Kunming Montreal Global Biodiversity Framework, the Sustainable Development Goal 13 (SDG 13) on Climate Action of the 2030 Agenda, and United Nations Convention to Combat Desertification.



These actions also contribute to the realization of the rights enshrined in the UNDRIP, including Indigenous Peoples' Free, Prior and Informed Consent (FPIC), and broader global commitments and frameworks related to ecosystem restoration, biodiversity conservation, climate action and Indigenous Peoples' rights.

Issued within the framework of the **Global Programme on Indigenous Peoples Biocentric Restoration**.

A handwritten signature in blue ink, appearing to read 'Yon Fernandez de Larrinoa', written over a horizontal line.

Yon Fernandez de Larrinoa

Head

Indigenous Peoples Unit - FAO

A solid horizontal line intended for a signature.

Mari Guay C.

Director

Centro Cindes



Main Indicators

Planted Trees: 48,847	Hectares in Restoration: 73.16
Biodiversity - Distinct Species: 5	Communities: 2
Schools of Life: 9	Participants on Schools of Life: 524
Nurseries: 0	Cosmological Achievements: Reflects wisdom in connection with the sun, earth, and the natural world for recovery of degraded lands.
Gender equality: Recognizing women's knowledge and creating economic opportunities for them is important.	Knowledge Systems: Transmission of ancestral knowledge to youth, linking medicinal plants to wisdom.
Biodiversity: Restoration with native species supporting pollinators, birds, and the recovery of high Andean ecosystems	Community leadership: Collective Indigenous leadership was consolidated in territorial management.

Global Alignment

<p>Kunming-Montreal Global Biodiversity Framework Targets Pursuit:</p> <p>TARGET 1: Plan and Manage all Areas to Reduce Biodiversity Loss</p> <p>TARGET 2: Restore 30% of all Degraded Ecosystems</p> <p>TARGET 4: Halt Species Extinction, Protect Genetic Diversity, and Manage Human- Wildlife Conflicts</p> <p>TARGET 11: Restore, Maintain and Enhance Nature's Contributions to People</p> <p>TARGET 14: Integrate Biodiversity in Decision-Making at Every Level</p> <p>TARGET 21: Ensure That Knowledge Is Available and Accessible to Guide Biodiversity Action</p> <p>TARGET 22: Ensure Participation in Decision-Making and Access to Justice and Information Related to Biodiversity for all</p> <p>TARGET 23: Ensure Gender Equality and a Gender-Responsive Approach for Biodiversity Action</p>



Monitoring System Data of the Global Programme on Indigenous Peoples Biocentric Restoration

1. Geographic Location of Indigenous Peoples Territory:

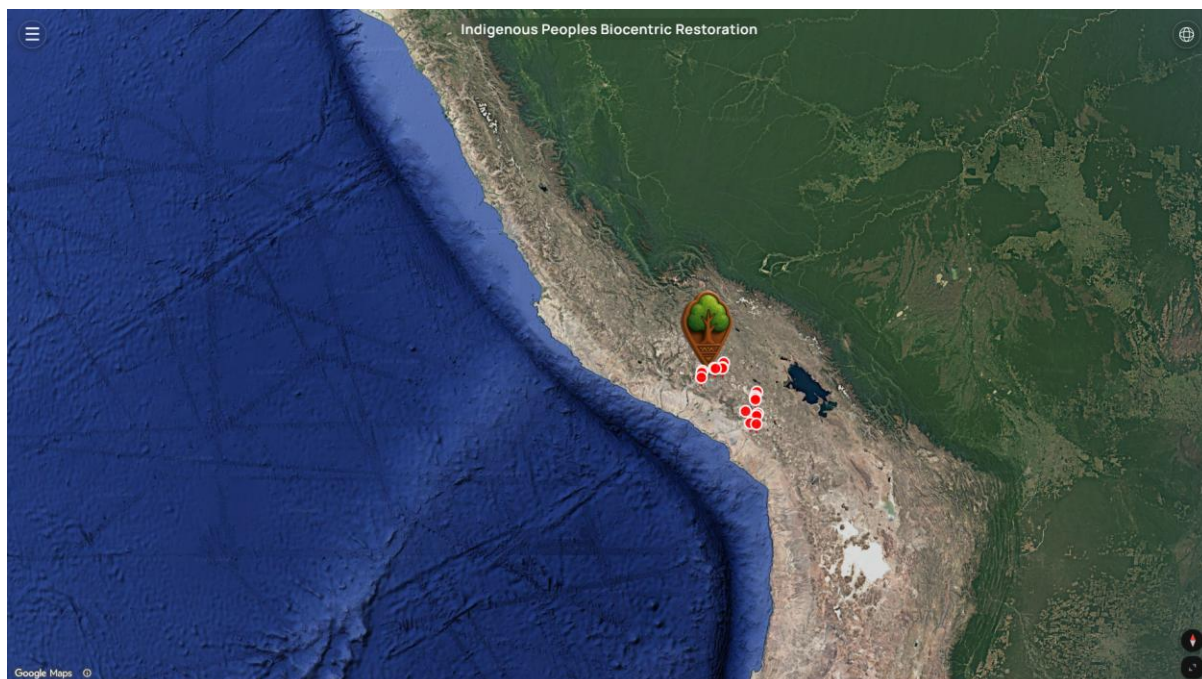


Figure 1: Geographic Location of Quechua Indigenous Territory, Andes Highlands Biome, Arequipa and Moquegua, Peru

Source: Monitoring System Data of the Global Programme on Indigenous Peoples Biocentric Restoration 2026

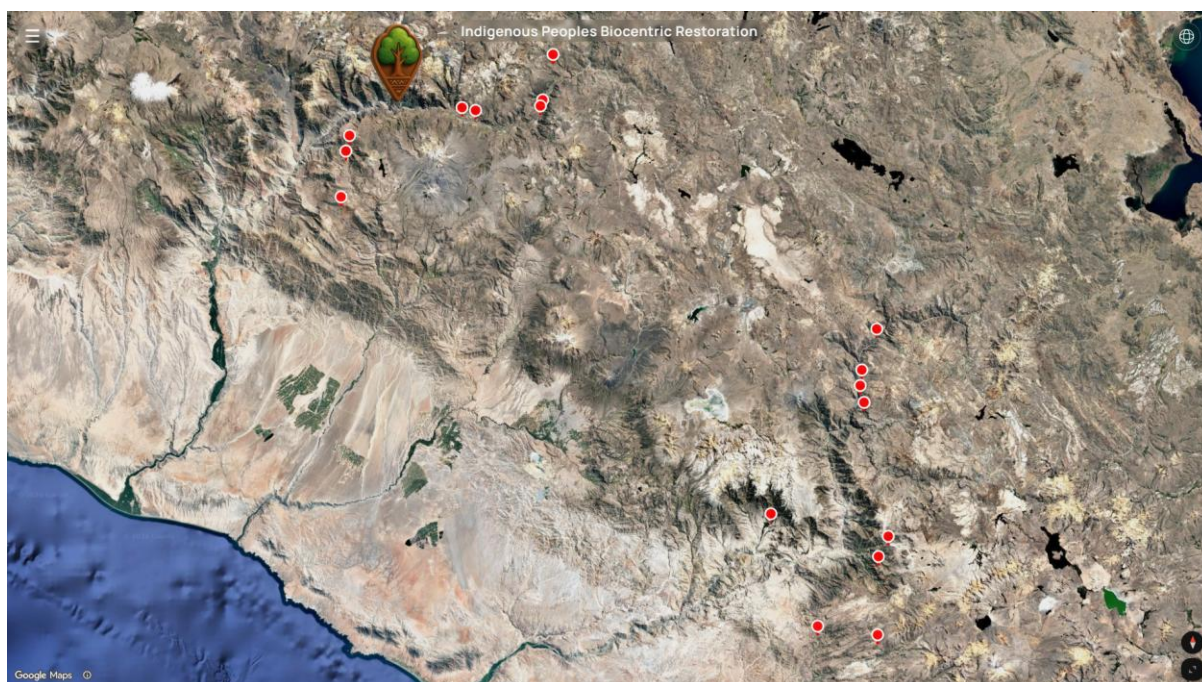


Figure 2: Georeferenced Biocentric Restoration Sites Areas

Source: Monitoring System Data of the Global Programme on Indigenous Peoples Biocentric Restoration 2026

2. Site-Level Details – Biocentric Restoration Map, Andes Highlands Biome¹



Hectares: 1.74
High Damage
Planted Trees: 1,575
📍 -15.6265502, -71.7635994



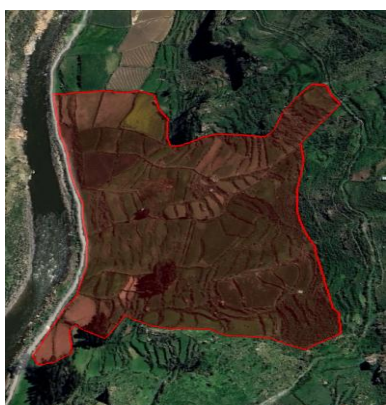
Hectares: 9.41
High Damage
Planted Trees: 9,500
📍 -15.8493930, -72.1237050



Hectares: 2.03
High Damage
Planted Trees: 6,000
📍 -15.6902682, -72.1020973



Hectares: 5.33
High Damage
Planted Trees: 5,000
📍 -15.7304903, -72.1120069



Hectares: 7.58
High Damage
Planted Trees: 350
📍 -15.59949, -71.58317



Hectares: 13.43
High Damage
Planted Trees: 60
📍 -15.4842826, -71.5553326



Hectares: 0.24
High Damage
Planted Trees: 262
📍 -15.6161178, -71.5895033



Hectares: 1.14
High Damage
Planted Trees: 100
📍 -15.6188824, -71.8001462



Hectares: 4.69
High Damage
Planted Trees: 500
📍 -15.5406873, -71.9718155

¹ Source: Monitoring System Data of the Global Programme on Indigenous Peoples Biocentric Restoration 2025



Hectares: 4.79
 High Damage
 Planted Trees: 3,500
 📍 -16.9582213, -70.8419810



Hectares: 7.49
 High Damage
 Planted Trees: 7,500
 📍 -16.9783462, -70.6815453



Hectares: 1.19
 High Damage
 Planted Trees: 1,000
 📍 -16.7241784, -70.6540113



Hectares: 5.98
 High Damage
 Planted Trees: 7,000
 📍 -16.7770039, -70.6793683



Hectares: 2.03
 High Damage
 Planted Trees: 1,500
 📍 -16.2953859, -70.7271756



Hectares: 1.05
 High Damage
 Planted Trees: 1,500
 📍 -16.3357438, -70.7305479



Hectares: 2
 High Damage
 Planted Trees: 1,500
 📍 -16.3790482, -70.7207124



Hectares: 1.54
 High Damage
 Planted Trees: 1,500
 📍 -16.1897166, -70.6865513



Hectares: 1.5
 High Damage
 Planted Trees: 500
 📍 -16.6689172, -70.9682736



See all details