



GLOBAL PROGRAMME ON INDIGENOUS PEOPLES BIOCENTRIC RESTORATION CERTIFICATE of HECTARES UNDER RESTORATION

Certification Statement

The Indigenous Peoples Unit (PSUI) at the United Nations Food and Agriculture Organization (FAO) and the International Bamboo and Rattan Organization (INBAR) certifies that the degraded areas included in this certificate are under a restoration process led by Kichwa - Amazonia Ecuador Indigenous Peoples, in alignment with the principles and methodology outlined in the Global Programme on Indigenous Peoples Biocentric Restoration.

This certificate acknowledges that Indigenous Peoples' Biocentric Restoration actions carried out in the traditional territory of Kichwa - Amazonia Ecuador during the period 2022 - 2023, located in the Amazon Forest biome are aligned with the principles, spirit, and methodology of the Global Programme on Indigenous Peoples' Biocentric Restoration, co-developed by Indigenous Peoples' leaders and FAO Indigenous Peoples Unit.

The restoration actions undertaken in this territory have been guided by knowledge systems and cosmogony of Indigenous Peoples, who see humankind as part of nature and whose beliefs are embedded in the principle of biocentrism, where humans are a part of the ecosystem and not its sole centre. All these elements form core dimensions of the Indigenous Peoples Biocentric Restoration approach.

This certificate acknowledges Indigenous Peoples as both right and knowledge holders, in alignment with the United Nations Declaration on the Rights of Indigenous Peoples (UNDRIP). Knowledge holders capable of restoring degraded ecosystems in their territories through their Indigenous Peoples' food and knowledge systems, culture, spiritual values, self-governance and stewardship practices that guide harmonious coexistence between humans, forests, drylands, waters, soils, species, and all living beings.

During this period, the Biocentric Restoration actions in the Kichwa - Amazonia Ecuador Indigenous Peoples territory resulted in 12,491 plants planted, covering 45.27 hectares that are under restoration, involving 157 native species, and the engagement of 123 Indigenous Peoples. These efforts were supported by 4 nurseries and 4 Schools of Life, reaching 123 participants with the collaboration of International Bamboo and Rattan Organization (INBAR).

These Indigenous Peoples' Biocentric Restoration efforts were supported by the FAO Indigenous Peoples Unit and other partner organizations in alignment with priorities identified by the Indigenous Peoples involved. The actions undertaken by Indigenous Peoples, under the Indigenous Peoples' Biocentric Restoration Global Programme, contribute directly to the objectives of the United Nations Decade on Ecosystem Restoration, the CBD Kunming Montreal Global Biodiversity Framework, the Sustainable Development Goal 13 (SDG 13) on Climate Action of the 2030 Agenda, and United Nations Convention to Combat Desertification.



These actions also contribute to the realization of the rights enshrined in the UNDRIP, including Indigenous Peoples' Free, Prior and Informed Consent (FPIC), and broader global commitments and frameworks related to ecosystem restoration, biodiversity conservation, climate action and Indigenous Peoples' rights.

Issued within the framework of the **Global Programme on Indigenous Peoples Biocentric Restoration**.

A handwritten signature in blue ink, appearing to read 'Yon Fernandez de Larrinoa', written over a horizontal line.

Yon Fernandez de Larrinoa

Head

Indigenous Peoples Unit - FAO

A solid horizontal line intended for a signature.

Pablo Jácome Estrella

Regional Director for Latin America and the
Caribbean

International Bamboo and Rattan
Organization (INBAR)



Main Indicators

| | |
|--|---|
| Planted Trees: 12,491 | Hectares in Restoration: 45.27 |
| Biodiversity - Distinct Species: 157 | Communities: 4 |
| Schools of Life: 4 | Participants on Schools of Life: 123 |
| Nurseries: 4 | Cosmological Achievements: Recognition of bamboo (wamag) as an ancestral resource linked to Indigenous Peoples cosmivision. |
| Gender equality: Actions led by young women, while upholding and transmitting the knowledge of ancestral elders. | Knowledge Systems: Bamboo (wamag) interaction with other species for food, medicinal, and spiritual uses. |
| Biodiversity: Bamboo (wamag) is an integral component of the forest ecosystem | Community leadership: Bamboo ancestral resource linked to the territory. |

Global Alignment

| |
|---|
| <p>Kunming-Montreal Global Biodiversity Framework Targets Pursuit:</p> <p>TARGET 1: Plan and Manage all Areas to Reduce Biodiversity Loss TARGET 2: Restore 30% of all Degraded Ecosystems TARGET 4: Halt Species Extinction, Protect Genetic Diversity, and Manage Human- Wildlife Conflicts TARGET 11: Restore, Maintain and Enhance Nature's Contributions to People TARGET 14: Integrate Biodiversity in Decision-Making at Every Level TARGET 21: Ensure That Knowledge Is Available and Accessible to Guide Biodiversity Action TARGET 22: Ensure Participation in Decision-Making and Access to Justice and Information Related to Biodiversity for all TARGET 23: Ensure Gender Equality and a Gender-Responsive Approach for Biodiversity Action</p> |
|---|



Monitoring System Data of the Global Programme on Indigenous Peoples Biocentric Restoration

1. Geographic Location of Indigenous Peoples Territory:

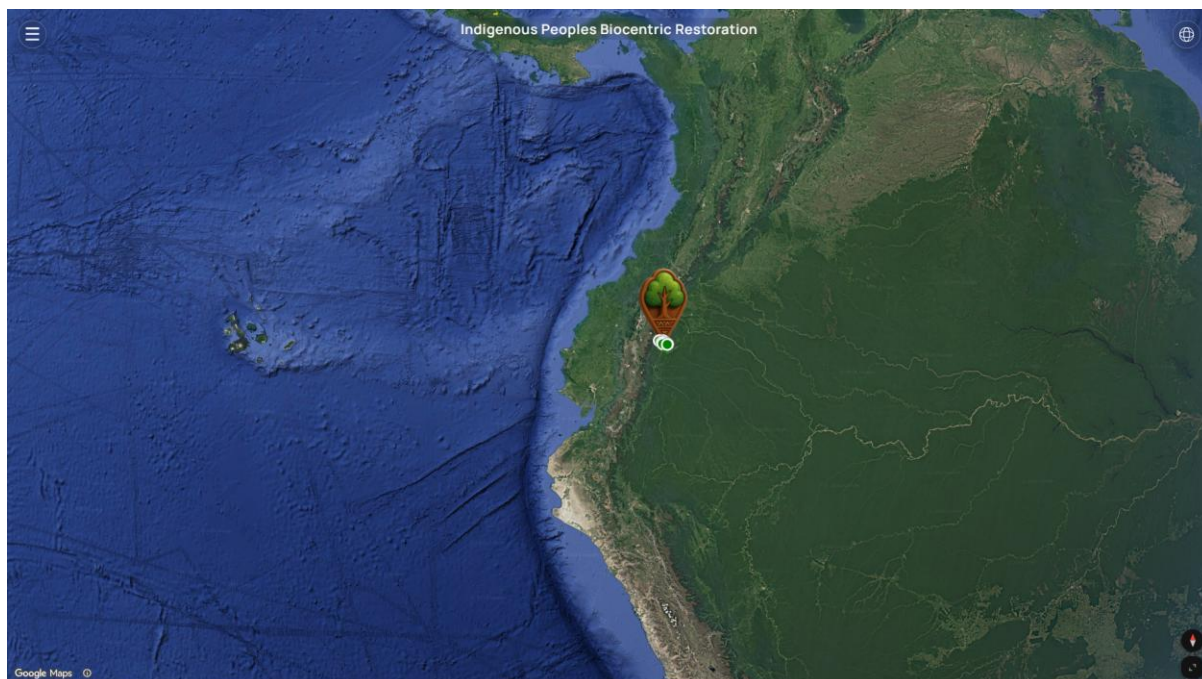


Figure 1: Geographic Location of Kichwa Indigenous Territory, Amazon Forest Biome, Tena, Napo State, Ecuador
Source: Monitoring System Data of the Global Programme on Indigenous Peoples Biocentric Restoration 2026

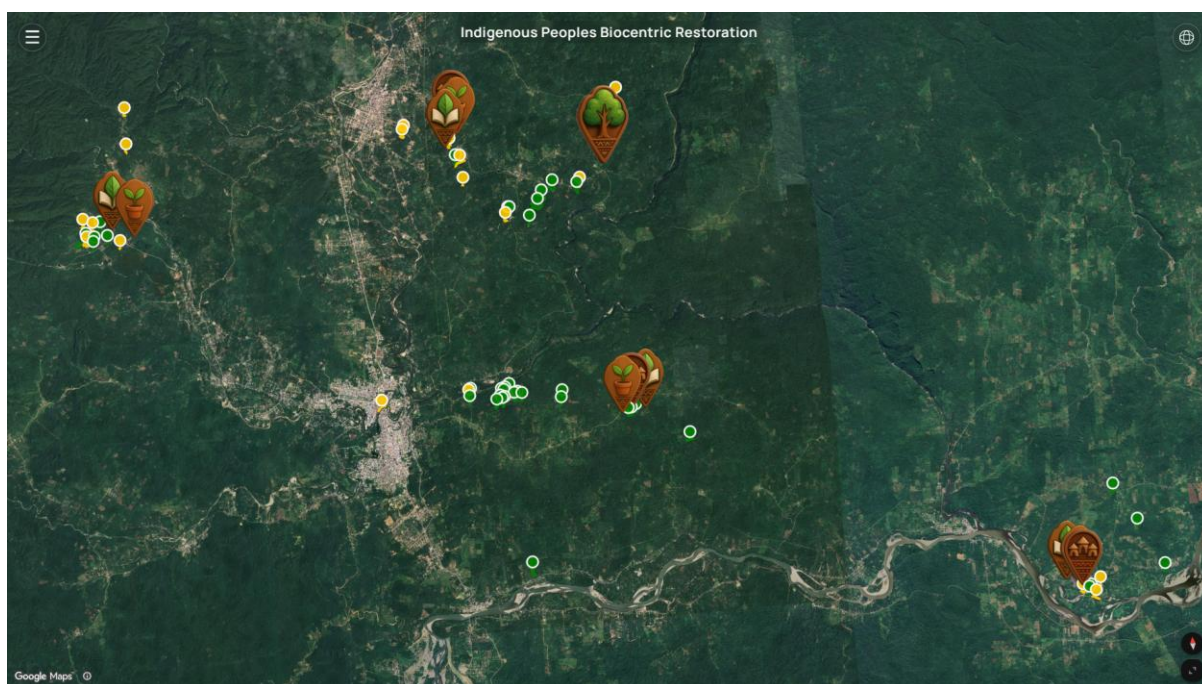


Figure 2: Georeferenced Biocentric Restoration Sites Areas
Source: Monitoring System Data of the Global Programme on Indigenous Peoples Biocentric Restoration 2026

2. Site-Level Details – Biocentric Restoration Map¹



Hectares: 0.11
 Medium Damage
 Planted Trees: 42
 📍 -0.9424844, -77.8767433



Hectares: 0.17
 Medium Damage
 Planted Trees: 35
 📍 -0.9180100, -77.8728585



Hectares: 1.19
 Medium Damage
 Planted Trees: 296
 📍 -0.9407757, -77.8850145



Hectares: 0.28
 Low Damage
 Planted Trees: 37
 📍 -0.9409919, -77.8830852



Hectares: 0.09
 Low Damage
 Planted Trees: 34
 📍 -0.9421163, -77.8834371



Hectares: 5.26
 Low Damage
 Planted Trees: 174
 📍 -0.9398730, -77.8851173



Hectares: 0.29
 Medium Damage
 Planted Trees: 182
 📍 -0.9362078, -77.8855708



Hectares: 0.29
 Medium Damage
 Planted Trees: 181
 📍 -0.9372735, -77.8831985



Hectares: 2.98
 Low Damage
 Planted Trees: 750
 📍 -0.9372422, -77.8813181

¹ Source: Monitoring System Data of the Global Programme on Indigenous Peoples Biocentric Restoration 2025



Hectares: 0.03
 Low Damage
 Planted Trees: 20
 📍 -0.9409148, -77.8797865



Hectares: 0.09
 Medium Damage
 Planted Trees: 40
 📍 -0.9087811, -77.8723180



Hectares: 2.89
 Low Damage
 Planted Trees: 31
 📍 -0.9337664, -77.8723945



Hectares: 0.19
 Low Damage
 Planted Trees: 484
 📍 -0.9343390, -77.8737670



Hectares: 1.49
 Low Damage
 Planted Trees: 625
 📍 -0.9885268, -77.7810310



Hectares: 1.12
 Low Damage
 Planted Trees: 229
 📍 -0.9893056, -77.7821814



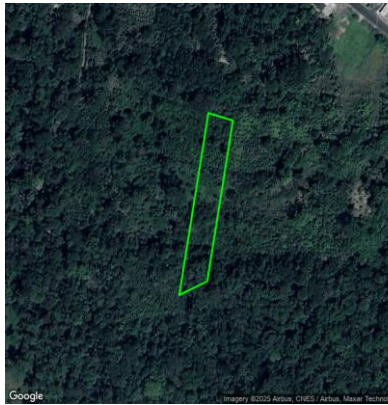
Hectares: 0.08
 Low Damage
 Planted Trees: 53
 📍 -0.9919355, -77.7830920



Hectares: 0.1
 Low Damage
 Planted Trees: 54
 📍 -0.9912710, -77.7835408



Hectares: 0.52
 Low Damage
 Planted Trees: 106
 📍 -0.9921890, -77.7845254



Hectares: 0.36
 Low Damage
 Planted Trees: 100
 📍 -0.9916976, -77.7825259



Hectares: 0.49
 Low Damage
 Planted Trees: 100
 📍 -0.9895970, -77.7831018



Hectares: 0.24
 Low Damage
 Planted Trees: 64
 📍 -0.9898824, -77.7825078



Hectares: 0.14
 Low Damage
 Planted Trees: 25
 📍 -0.9911376, -77.7779133



Hectares: 0.3
 Low Damage
 Planted Trees: 95
 📍 -0.9906918, -77.7790533



Hectares: 0.14
 Low Damage
 Planted Trees: 40
 📍 -0.9908774, -77.7798942



Hectares: 0.19
 Low Damage
 Planted Trees: 75
 📍 -0.9931568, -77.7679736



Hectares: 0.49
 Low Damage
 Planted Trees: 42
 📍 -0.9914132, -77.7675957



Hectares: 0.3
 Low Damage
 Planted Trees: 92
 📍 -0.9888030, -77.7909700



Hectares: 0.46
 Medium Damage
 Planted Trees: 538
 📍 -0.9891070, -77.7914805



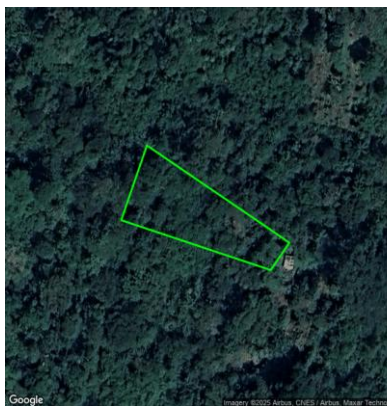
Hectares: 0.1
 Low Damage
 Planted Trees: 94
 📍 -0.9906580, -77.7913155



Hectares: 0.35
 Medium Damage
 Planted Trees: 276
 📍 -0.9896436, -77.8139451



Hectares: 0.18
 Low Damage
 Planted Trees: 74
 📍 -0.9967510, -77.7492686



Hectares: 0.19
 Low Damage
 Planted Trees: 90
 📍 -0.9970756, -77.7509217



Hectares: 0.29
 Low Damage
 Planted Trees: 158
 📍 -0.9974791, -77.7504572



Hectares: 0.09
 Low Damage
 Planted Trees: 34
 📍 -0.9975426, -77.7512592



Hectares: 0.63
 Low Damage
 Planted Trees: 200
 📍 -1.0051580, -77.7361888



Hectares: 2.08
 Low Damage
 Planted Trees: 694
 📍 -1.0344580, -77.7793677



Hectares: 0.34
 Medium Damage
 Planted Trees: 138
 📍 -1.0536943, -77.6395527



Hectares: 0.32
 Medium Damage
 Planted Trees: 31
 📍 -1.0523515, -77.6349091



Hectares: 0.58
 Low Damage
 Planted Trees: 60
 📍 -1.0423329, -77.6387317



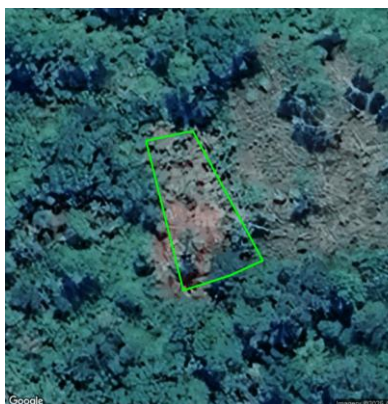
Hectares: 0.52
 Low Damage
 Planted Trees: 52
 📍 -1.0447290, -77.6360442



Hectares: 0.55
 Medium Damage
 Planted Trees: 55
 📍 -1.0555313, -77.6363250



Hectares: 0.55
 Low Damage
 Planted Trees: 55
 📍 -1.0476268, -77.6367163



Hectares: 0.05
 Low Damage
 Planted Trees: 30
 📍 -1.0492428, -77.6388670



Hectares: 1.09
 Low Damage
 Planted Trees: 226
 📍 -1.0288534, -77.6292922



Hectares: 0.08
 Low Damage
 Planted Trees: 8
 📍 -1.0384004, -77.6239839



Hectares: 0.2
 Low Damage
 Planted Trees: 56
 📍 -1.0503773, -77.6180706



Hectares: 0.22
 Low Damage
 Planted Trees: 62
 📍 -1.0545161, -77.6379582



Hectares: 0.22
 Low Damage
 Planted Trees: 1,075
 📍 -1.0539725, -77.6375052



Hectares: 0.4
 Medium Damage
 Planted Trees: 160
 📍 -0.9206734, -77.8023435



Hectares: 0.05
 Medium Damage
 Planted Trees: 54
 📍 -0.9197014, -77.8018621



Hectares: 0.11
 Medium Damage
 Planted Trees: 38
 📍 -0.9168678, -77.7900784



Hectares: 0.6
 Medium Damage
 Planted Trees: 123
 📍 -0.9171788, -77.7899627



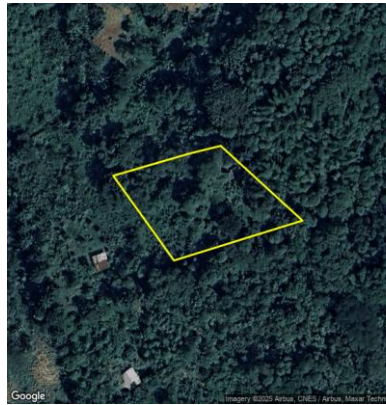
Hectares: 0.1
 Medium Damage
 Planted Trees: 37
 📍 -0.9170243, -77.7890301



Hectares: 0.1
 Medium Damage
 Planted Trees: 38
 📍 -0.9180512, -77.7900577



Hectares: 1.39
 Medium Damage
 Planted Trees: 213
 📍 -0.9207417, -77.7896909



Hectares: 0.25
 Medium Damage
 Planted Trees: 100
 📍 -0.9217853, -77.7893239



Hectares: 0.45
 Low Damage
 Planted Trees: 171
 📍 -0.9227547, -77.7903456



Hectares: 0.62
 Medium Damage
 Planted Trees: 145
 📍 -0.9242586, -77.7904343



Hectares: 0.42
 Low Damage
 Planted Trees: 85
 📍 -0.9286995, -77.7892159



Hectares: 0.8
 Medium Damage
 Planted Trees: 315
 📍 -0.9288928, -77.7881313



Hectares: 0.07
 Medium Damage
 Planted Trees: 164
 📍 -0.9347169, -77.7877907



Hectares: 0.11
 Low Damage
 Planted Trees: 38
 📍 -0.9434037, -77.7766767



Hectares: 0.11
 Low Damage
 Planted Trees: 38
 📍 -0.9433647, -77.7770640



Hectares: 0.4
 Medium Damage
 Planted Trees: 246
 📍 -0.9447706, -77.7777984



Hectares: 0.41
 Low Damage
 Planted Trees: 181
 📍 -0.9460680, -77.7717260



Hectares: 3.18
 Low Damage
 Planted Trees: 710
 📍 -0.9419624, -77.7692476



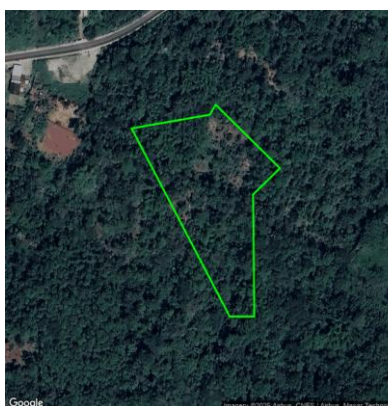
Hectares: 2.07
 Low Damage
 Planted Trees: 338
 📍 -0.9398742, -77.7680876



Hectares: 1.57
 Low Damage
 Planted Trees: 349
 📍 -0.9375389, -77.7650658



Hectares: 0.64
 Medium Damage
 Planted Trees: 319
 📍 -0.9375491, -77.7579792



Hectares: 1.3
 Low Damage
 Planted Trees: 288
 📍 -0.9386087, -77.7588027



Hectares: 0.79
 Low Damage
 Planted Trees: 202
 📍 -0.9267173, -77.7515924



Hectares: 0.42
 Medium Damage
 Planted Trees: 127
 📍 -0.9155088, -77.7465450

